A stylized white map of Sub-Saharan Africa is positioned on the left side of the slide, partially enclosed by a white circular arc. The background features a green field with blue wavy lines representing rivers or roads.

# Covenant of Mayors in Sub-Saharan Africa (CoM SSA)

Making Nature-Based projects Attractive for Investment

Abel Omanga (GIZ-CoM SSA, Kenya)

The Technical Advisor

Climate and Urban Development

CoM SSA is co-funded by:

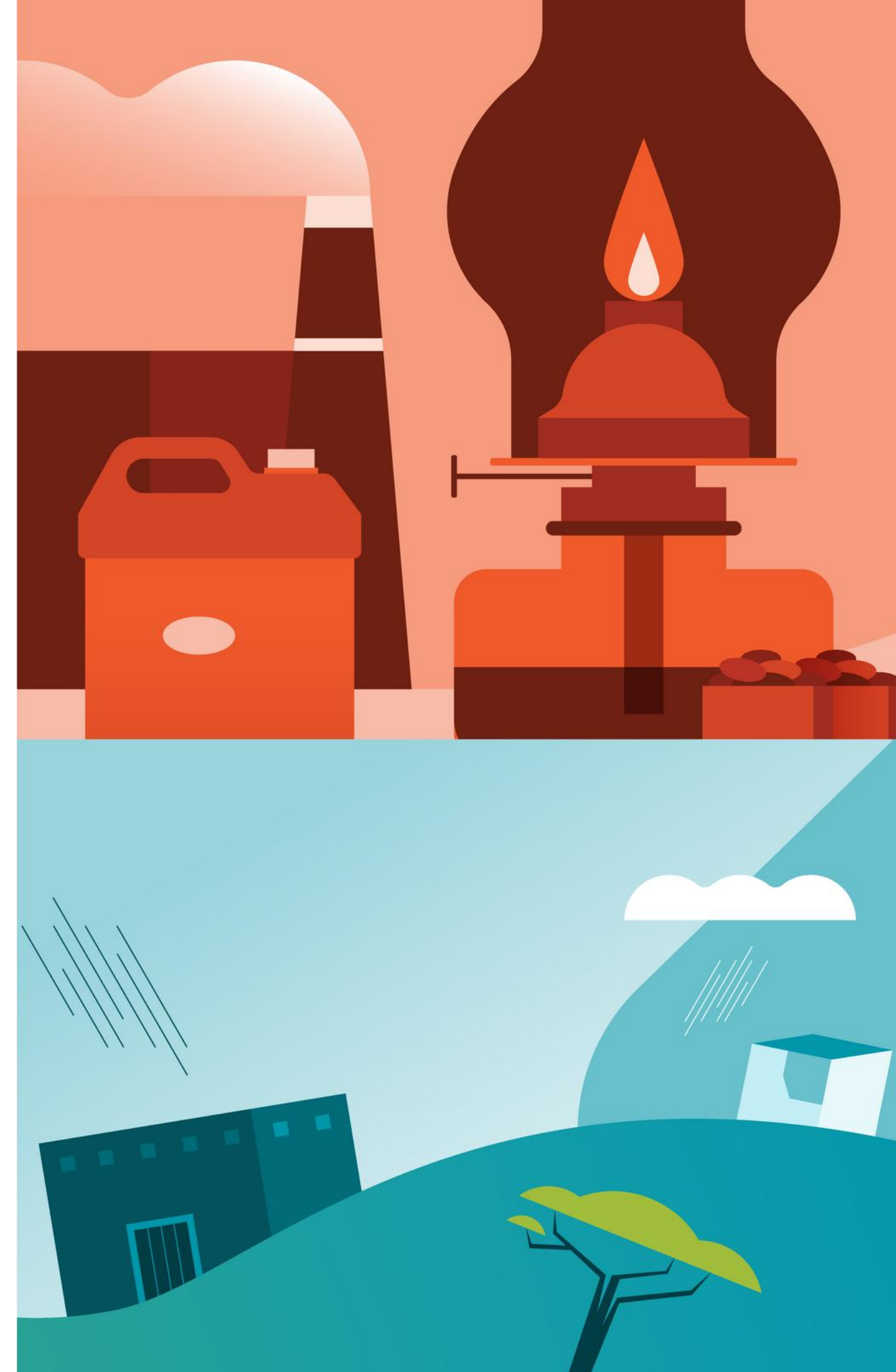


Co-implemented by:



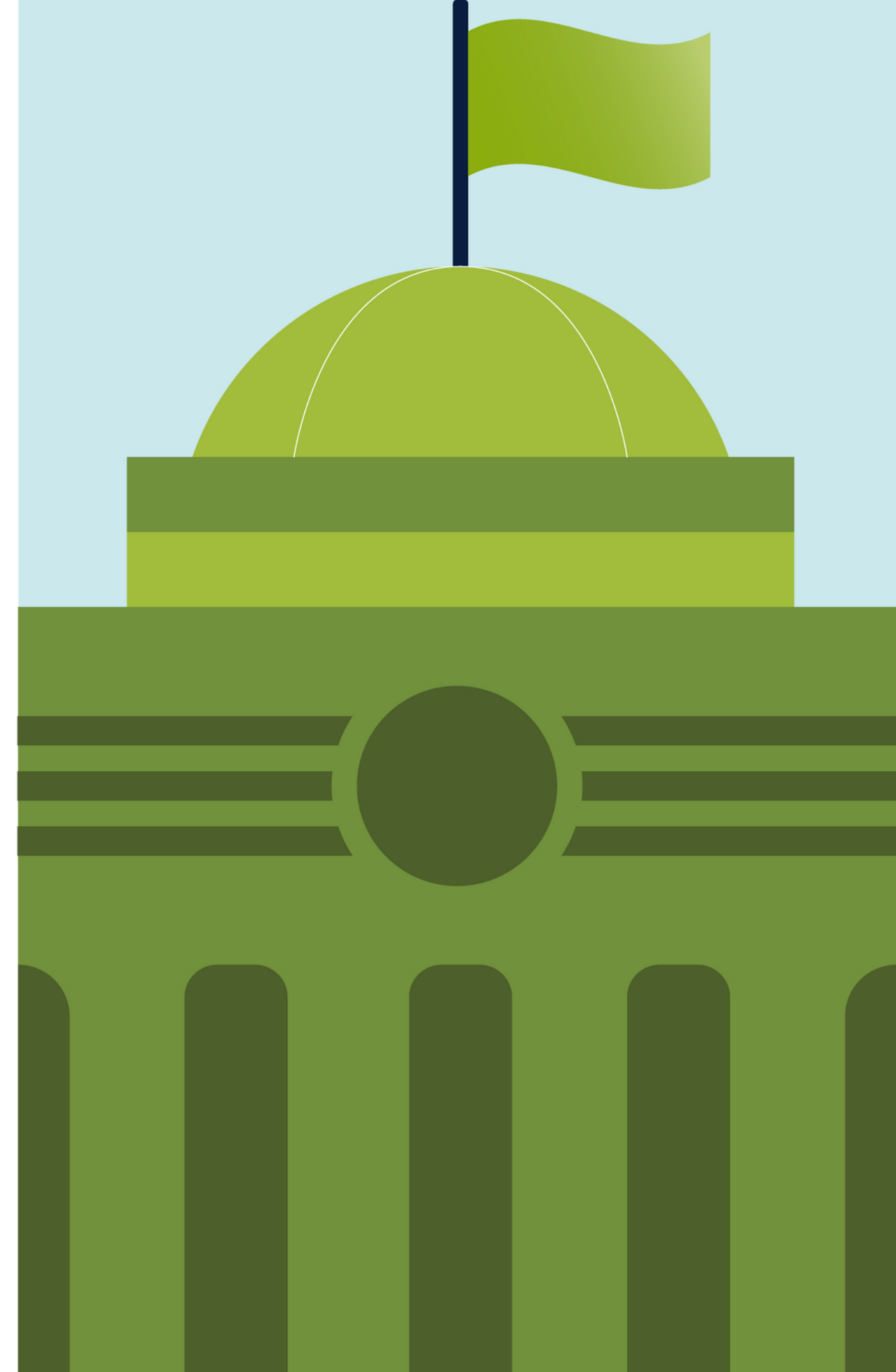
# WHY CITIES AND CLIMATE GLOBALLY

- 1 Over **83% of cities** are dealing with the effects of climate change.
- 2 A significant amount of urban areas are coastal and at risk of storms and flooding.
- 3 Cities consume 2/3 of the world's energy and contribute 70% to global emissions.
- 4 **750 million** people still lack access to electricity.



# WHY CITIES AND CLIMATE **IN AFRICA**

- 1 By **2050**: Triple the urban population.
- 2 **4%** contribution to global greenhouse gas emissions.
- 3 **3%** of total climate finance received.
- 4 **600** million people lack access to electricity in sub-Saharan Africa.



# COM SSA IS THE REGIONAL COVENANT TO THE GLOBAL COVENANT OF MAYORS

- 1 388+ signatories
- 2 40+ countries
- 3 164 million people reached
- 4 9 of 15 largest African cities
- 5 3 languages – French, English and Portuguese



**CoM SSA supports local governments** in developing robust, evidence-based **climate and energy plans** and helps **turn these into concrete, bankable projects.**

CoM SSA is co-implemented by:



The CoM SSA Secretariat is hosted by:



# CoM SSA OBJECTIVES



**Overall objective:** Strengthen climate adaptation, mitigation, and resilience in urban areas in Sub-Saharan Africa, in accordance with the African Climate Action framework and the Paris Agreement.

## Specific Objectives

1

Improve participatory and gender-responsive planning and identification of climate mitigation and adaptation actions in SSA cities in the context of wider urban development plans.

2

Increase climate change adaptation and mitigation investments in targeted urban areas.

3

Improve the conditions for urban climate actions in targeted countries.

# CoM SSA Model and City Engagement



## Approach 1 - Climate-Resilient Urban Planning:

Support for the development, integration, and monitoring of gender-responsive climate risk reduction, mitigation, and adaptation strategies.

## Approach 2 - Technical Assistance for Project Preparation

Hands-on support for climate mitigation and/or adaptation projects in the implementation phase. This includes co-developing pre-feasibility/feasibility studies, identifying financing options, and strengthening local capacity across government, private sector, and civil society stakeholders.

## Approach 3 - Regional Cooperation and Peer Learning:

Facilitation of regional exchanges and peer-to-peer learning among signatory cities. This component promotes knowledge sharing, joint advocacy, and strengthened partnerships to scale up effective climate action across regions.



**SEACAP+**

Sustainable Energy Access and Climate Action Plans



**USE**

Identifying, assessing and facilitation of funding for Urban Smart Energy projects.



**CRIB**

Climate Resilient Infrastructure Booster



**URBAN LAB**

Tackling complex, cross sectoral urban challenges



**C2C**

City-to-City Exchange

# Technical Support Framework for Sustainable Cities

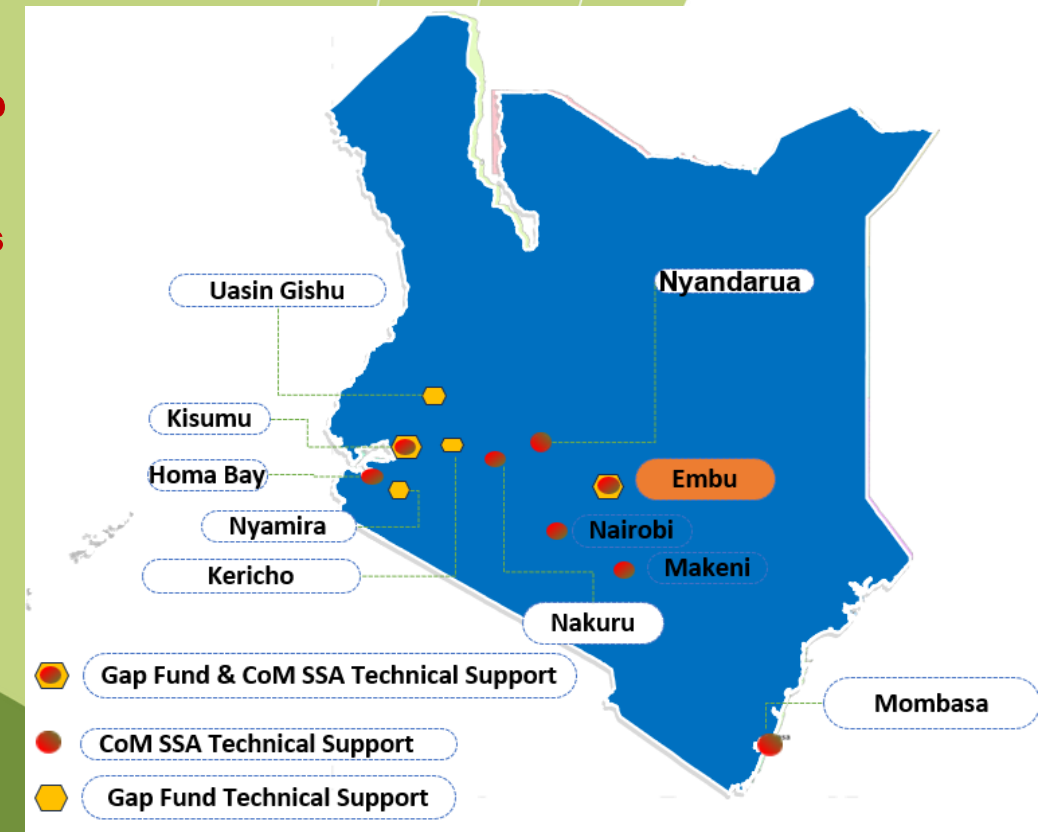
Our technical support is designed to bridge the gap between urban climate ambitions and bankable infrastructure. We provide end-to-end assistance across three critical pillars:

## 1. Strategic Planning & Project Conceptualization

We help cities lay the groundwork for long-term resilience by integrating climate data into urban development.

- **Planning Tools:** Facilitating the development of **Sustainable Energy Access and Climate Action Plans (SEACAP)** and utilizing the **EQUAL tool** to ensure equitable climate interventions.
- **Capacity Building:** Strengthening city-level expertise in strategic envisioning and the technical aspects of project development.
- **Collaborative Ideation:** Driving project co-creation through stakeholder workshops to ensure local relevance and ownership.

CoM SSA & Gap Fund Technical Support to Cities/ Counties 2019-2026



### Planning Technical Support

- 1) Nakuru-Climate Action and Energy Plans
- 2) Embu-Solid Waste Management plan & Green Infrastructure Plan for Dallas Informal Settlement
- 3) Mombasa-Flood Management Strategy
- 4) Nyamira-Solid Waste Management Plan
- 5) Kisumu-Climate Action Plan (Expertise France)
- 6) Nyandarua-Climate Action

# Technical Support Framework for Sustainable Cities

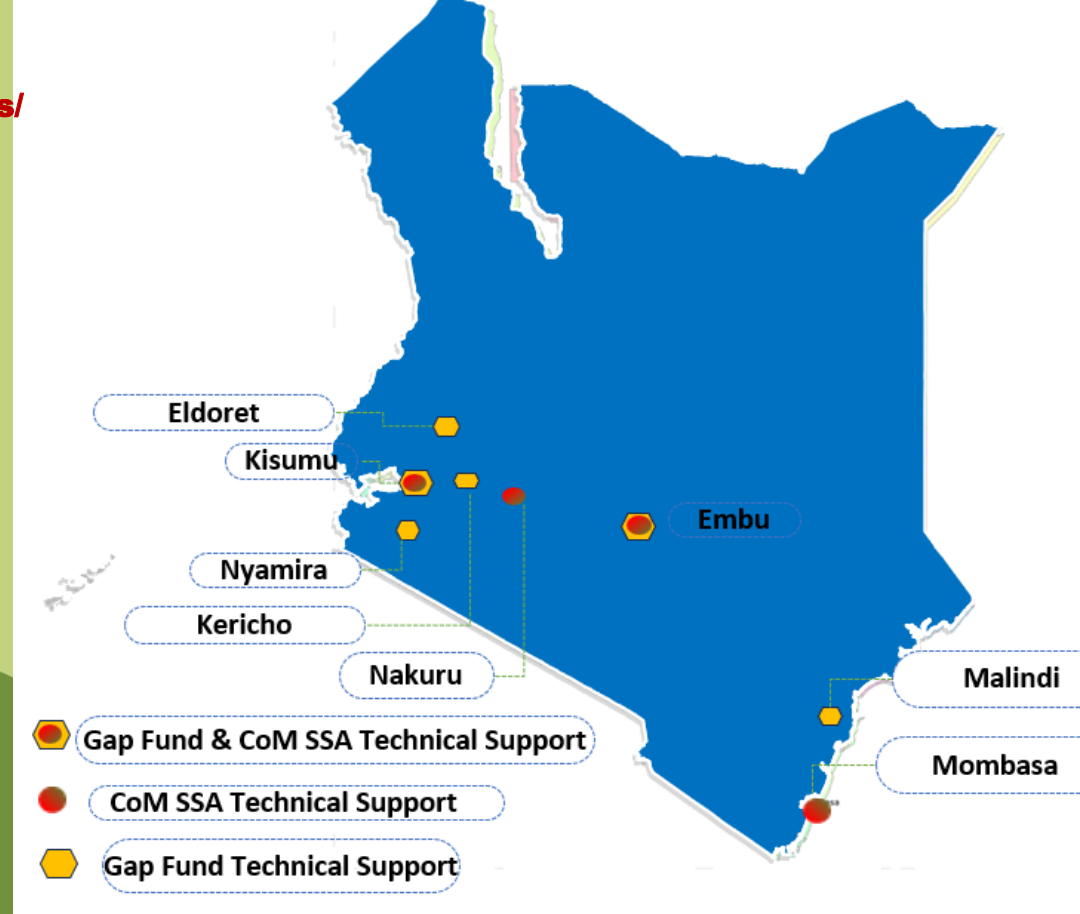
Our technical support is designed to bridge the gap between urban climate ambitions and bankable infrastructure. We provide end-to-end assistance across three critical pillars:

## 2. Project Feasibility & Validation

Before a project reaches the market, we ensure it is technically and economically sound.

- **Early-Stage Preparation:** Conducting rigorous **pre-feasibility studies** to assess the viability of climate-smart infrastructure.
- **Risk Assessment:** Identifying potential technical or regulatory hurdles at the onset to streamline the development phase.

CoM SSA & Gap Fund Technical Support to Cities/Counties 2019-2026



### Project Development Technical Support

- 1) Nakuru, Kisumu and Mombasa -**Solar Pv feasibility Studies(CoM SSA)**
- 2) Embu-**Solid Waste Management Infrastructure Prefeasibility Studies (Gap Fund)**
- 3) Nyamira-**Solid Waste Management Intervention measures Prefeasibility Studies (Gap Fund)**
- 4) Kisumu-**River Restoration and Urban Green Prefeasibility Study at Auji Creek(Gap Fund)**
- 5) Eldoret City-**Urban Green Prefeasibility Study (Gap Fund)**
- 6) Malindi-**Non-Motorised measures Prefeasibility Study (Gap Fund)**
- 7) Kericho-**Waste to Energy Options Prefeasibility (Gap Fund)**

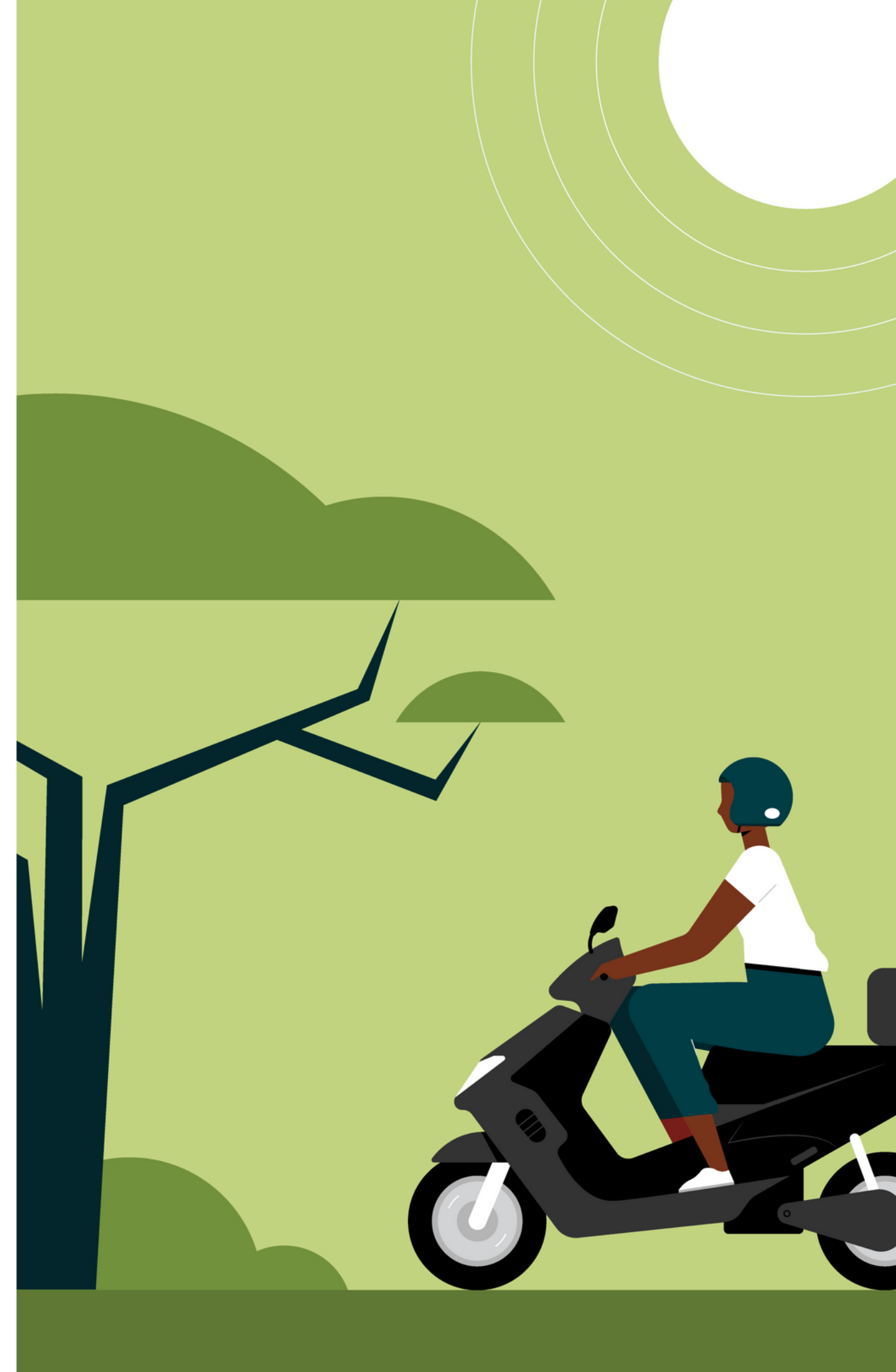
# Technical Support Framework for Sustainable Cities

Our technical support is designed to bridge the gap between urban climate ambitions and bankable infrastructure. We provide end-to-end assistance across three critical pillars:

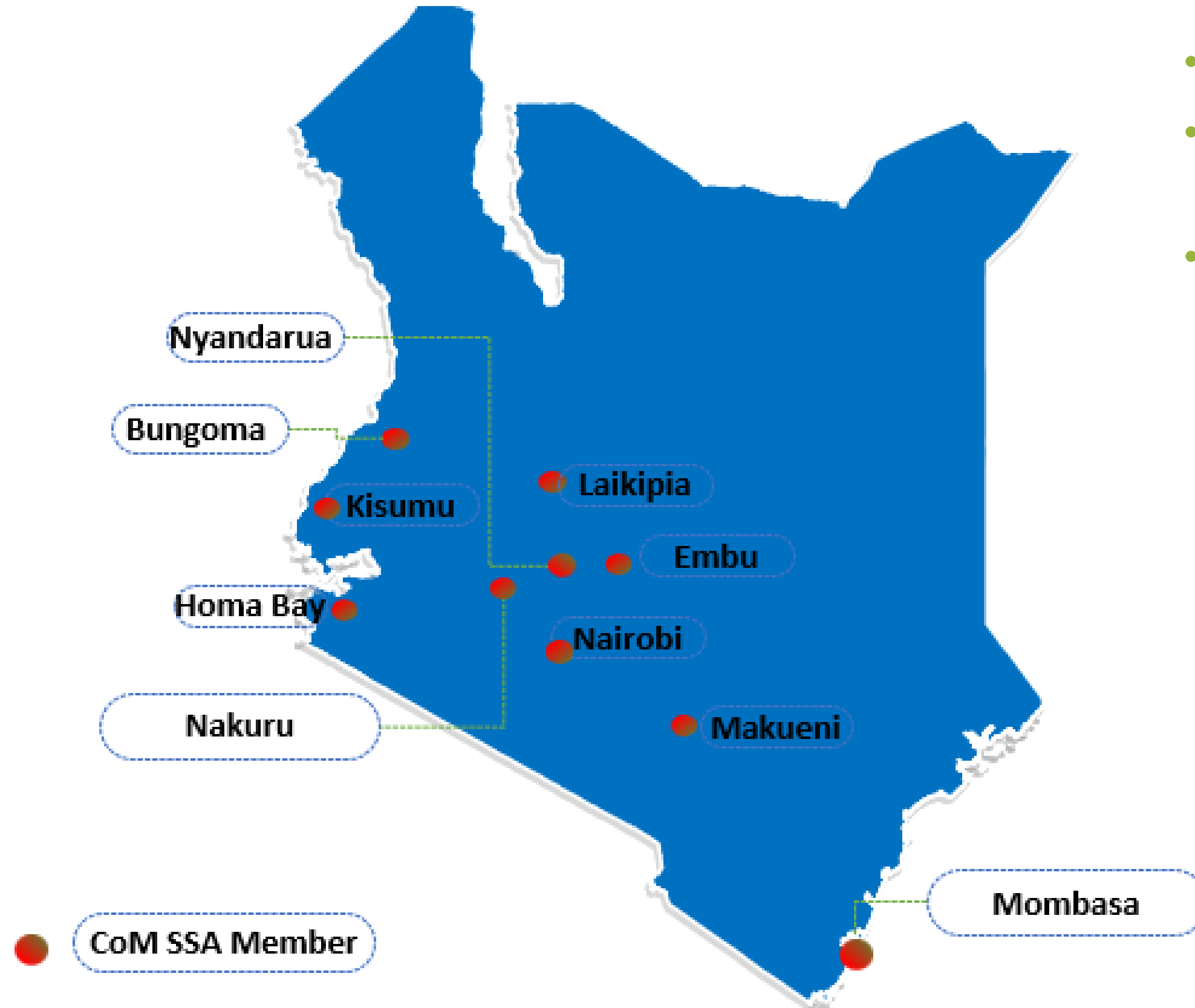
## 3. Investment Mobilization

We transform conceptual projects into attractive assets for international and local capital.

- **Bankable Packaging:** Structuring project documentation to meet the rigorous standards of global investors and development finance institutions.
- **Tender Structuring:** Providing technical advisory on procurement and tender design to ensure transparency and market interest.
- **Financial Matchmaking:** Identifying diverse financing options and facilitating direct introductions to green funds, private investors, and multilateral banks.



# CoM SSA Kenya Membership @2026



- **10** Member counties
- Represents over **25%** of the country's population
- Represented at the Regional Mayor's Forum by Embu, County

# Thank You

## Find us on social media

  @CoMOSSAfrica     comssa.org

  Covenant of Mayors in Sub-Saharan Africa



## CoM SSA is co-funded by:



This presentation was produced with the financial support of the European Union, the German Federal Ministry of economic cooperation and development, and the Spanish Agency for International Development Cooperation. Its content is the sole responsibility of the author and does not necessarily reflect the views of the European Union or the other co-funders.

