

Alexander Jachnow

Risk informed planning for resilient cities



What is (urban) resilience?

Resilience 101: The basics

There are various definitions of resilience, but nearly all of them are comparable. The following resilience definitions are adapted from USAID, Rockefeller, BMZ and others)

1. The **capacity that ensures** adverse stressors and shocks do **not have long lasting adverse consequences** on development.
2. The **ability of systems** (societies, households, communities, countries...) to **mitigate, adapt to, and recover** from shocks and stresses in a manner that **reduces chronic vulnerability and facilitates inclusive growth**.
3. The **ability of individuals or communities to survive** difficult life situations such as crises or disasters without permanent impairment. Resilience in relation to climate change, for example, means that people **learn to live with the risks** and consequences of global warming, to adapt their behaviour and to prevent future crises.
4. **Urban resilience** is the **capacity of individuals, communities, institutions, businesses, and systems** within a city **to survive, adapt, and grow** no matter what kinds chronic stresses and acute shocks they experience.

Non-resilient people and societies are often referred to as 'vulnerable'

resilience?

Resilience 101: The basics

There are various definitions of resilience, but nearly all of them are comparable. The following resilience definitions are adapted from USAID, Rockefeller, BMZ and others)

1. The **capacity that ensures** adverse stressors and shocks do **not have long lasting adverse consequences** on development.
2. The **ability of systems** (societies, households, communities, countries...) to **mitigate, adapt to, and recover** from shocks and stresses in a manner that **reduces chronic vulnerability and facilitates inclusive growth**.
3. The **ability of individuals or communities to survive** difficult life situations such as crises or disasters without permanent impairment. Resilience in relation to climate change, for example, means that people **learn to live with the risks** and consequences of global warming, to adapt their behaviour and to prevent future crises.
4. **Urban resilience** is the **capacity of individuals, communities, institutions, businesses, and systems** within a city **to survive, adapt, and grow** no matter what kinds chronic stresses and acute shocks they experience.

Non-resilient people and societies are often referred to as "**vulnerable**"



natural
environment



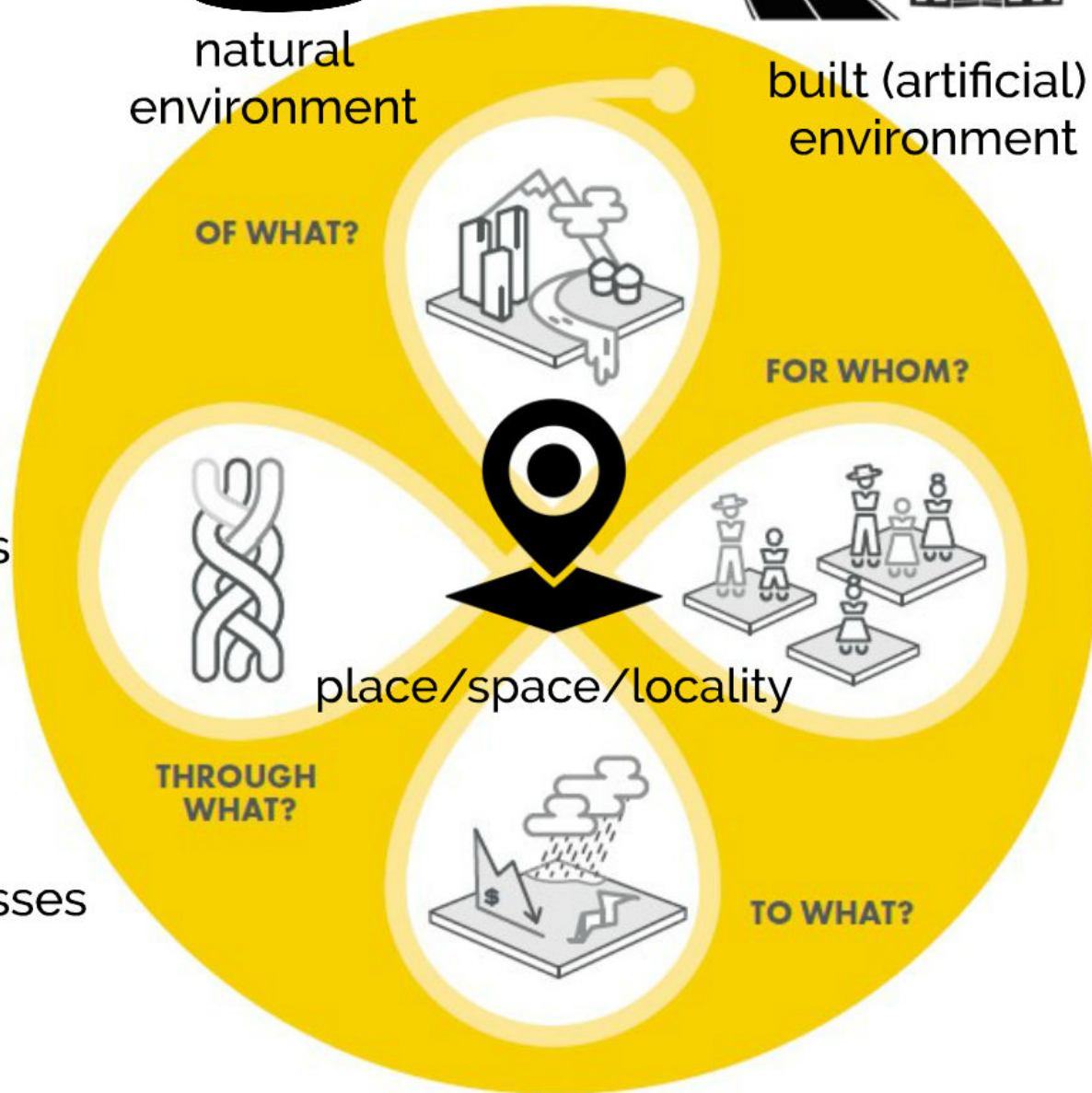
built (artificial)
environment



institutions



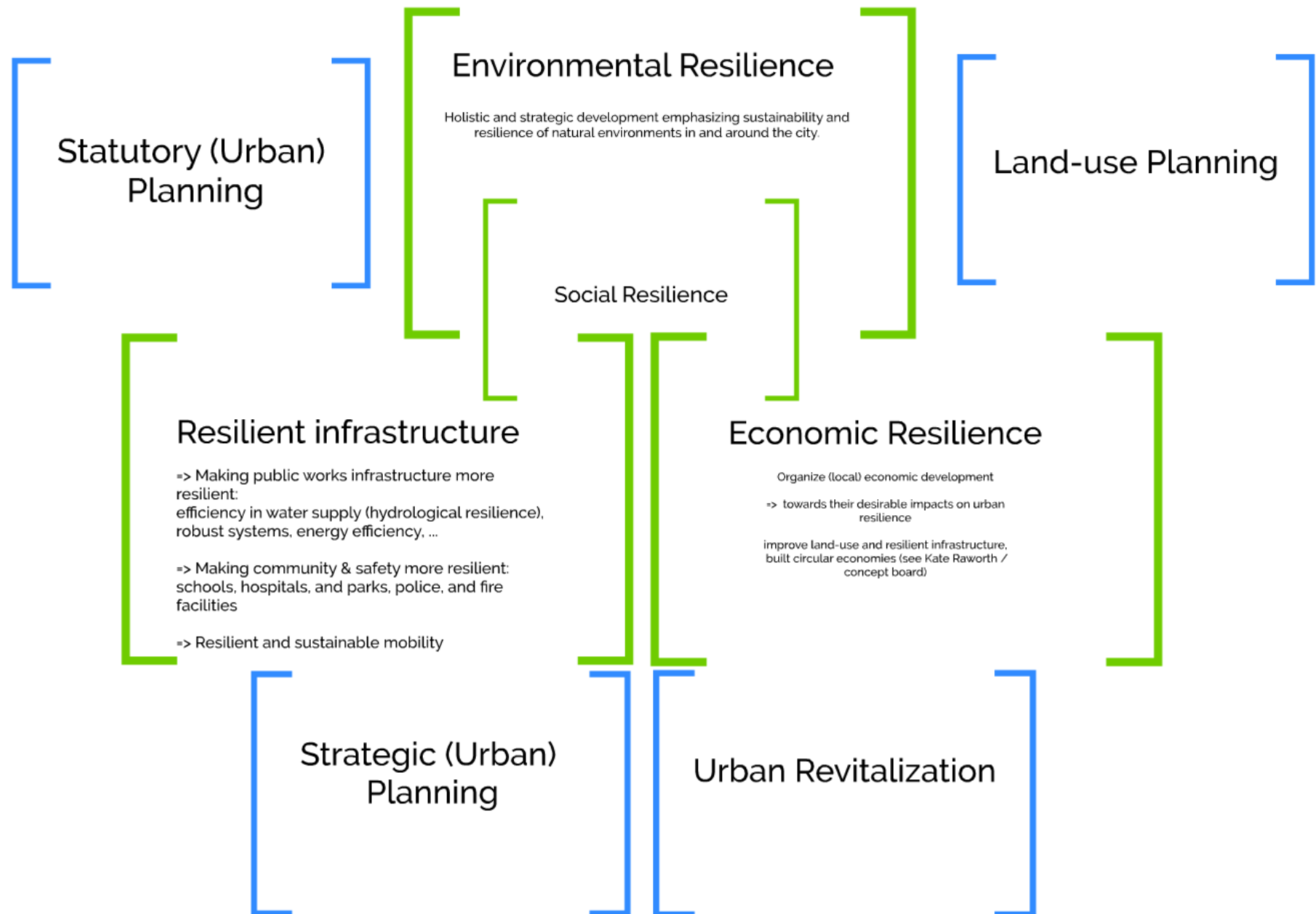
time & processes



citizens

How to achieve
resilience
(via planning)?

Concepts of resilience



Resilient infrastructure

=> Making public works infrastructure more resilient:
efficiency in water supply (hydrological resilience),
robust systems, energy efficiency, ...

=> Making community & safety more resilient:
schools, hospitals, and parks, police, and fire
facilities

=> Resilient and sustainable mobility

The slide features several L-shaped brackets as decorative elements. There are four green brackets: one at the top left, one at the top center, one at the top right, and one at the bottom right. There are two blue brackets: one at the bottom left and one at the bottom center. The main title 'Economic Resilience' is centered in a large, black, sans-serif font.

Economic Resilience

Organize (local) economic development

=> towards their desirable impacts on urban
resilience

improve land-use and resilient infrastructure,
built circular economies (see Kate Raworth /
concept board)

Environmental Resilience

Holistic and strategic development emphasizing sustainability and resilience of natural environments in and around the city.

Social Resilience

ory (Urban)
anning

Environmental Resilience

Holistic and strategic development emphasizing sustainability and resilience of natural environments in and around the city.

Land-use

Social Resilience

Resilient infrastructure

=> Making public works infrastructure more resilient:
efficiency in water supply (hydrological resilience),
robust systems, energy efficiency, ...

=> Making community & safety more resilient:
schools, hospitals, and parks, police, and fire
facilities

=> Resilient and sustainable mobility

Economic Resilience

Organize (local) economic development

=> towards their desirable impacts on urban
resilience

improve land-use and resilient infrastructure,
built circular economies (see Kate Raworth /
concept board)



11 SUSTAINABLE CITIES AND COMMUNITIES



Sustainable Development Goal



Make cities and human settlements inclusive, safe, resilient and sustainable.






<https://www.globalgoals.org/resources/#icons-for-the-goals>

cities and human settlements inc resilient and sustainable.

TARGET 11-1	TARGET 11-2	TARGET 11-3	TARGET 11-4	TARGET 11-5	TARGET 11-6	TARGET 11-7
						
SAFE AND AFFORDABLE HOUSING	AFFORDABLE AND SUSTAINABLE TRANSPORT SYSTEMS	INCLUSIVE AND SUSTAINABLE URBANIZATION	PROTECT THE WORLD'S CULTURAL AND NATURAL HERITAGE	REDUCE THE ADVERSE EFFECTS OF NATURAL DISASTERS	REDUCE THE ENVIRONMENTAL IMPACT OF CITIES	PROVIDE ACCESS TO SAFE AND INCLUSIVE GREEN AND PUBLIC SPACES

TARGET 11-A	TARGET 11-B	TARGET 11-C
		

TARGET 11-A	TARGET 11-B	TARGET 11-C
		
STRONG NATIONAL AND REGIONAL DEVELOPMENT PLANNING	IMPLEMENT POLICIES FOR INCLUSION, RESOURCE EFFICIENCY AND DISASTER RISK REDUCTION	SUPPORT LEAST DEVELOPED COUNTRIES IN SUSTAINABLE AND RESILIENT BUILDING

<https://www.globalgoals.org/resources/#icons-for-the-goals>



the global vision

(SDG 11)

Making cities and human settlements
inclusive, safe, resilient and sustainable.

Enhancing resilience through spatial planning

all "human settlements"...

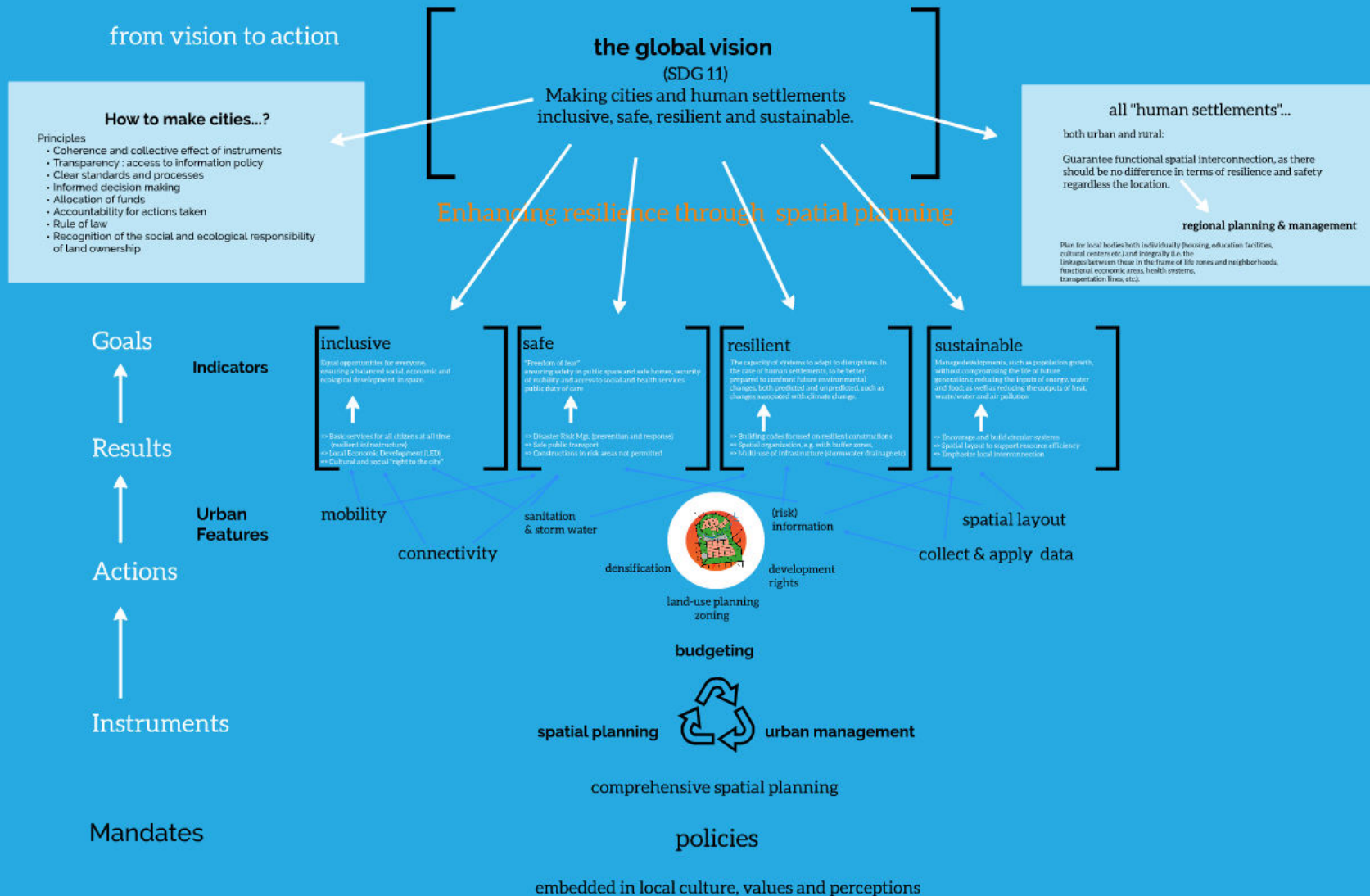
both urban and rural:

Guarantee functional spatial interconnection, as there should be no difference in terms of resilience and safety regardless the location.



regional planning & management

Plan for local bodies both individually (housing, education facilities, cultural centers etc.) and integrally (i.e. the linkages between these in the frame of life zones and neighborhoods, functional economic areas, health systems, transportation lines, etc.).



inclusive

Equal opportunities for everyone,
ensuring a balanced social, economic and
ecological development in space.



- => Basic services for all citizens at all time
(resilient infrastructure)
- => Local Economic Development (LED)
- => Cultural and social "right to the city"

safe

"Freedom of fear"

ensuring safety in public space and safe homes, security of mobility and access to social and health services

public duty of care



=> Disaster Risk Mgt. (prevention and response)

=> Safe public transport

=> Constructions in risk areas not permitted



resilient

The capacity of systems to adapt to disruptions. In the case of human settlements, to be better prepared to confront future environmental changes, both predicted and unpredicted, such as changes associated with climate change.



- => Building codes focused on resilient constructions
- => Spatial organization, e.g. with buffer zones,
- => Multi-use of infrastructure (stormwater drainage etc)



sustainable

Manage developments, such as population growth, without compromising the life of future generations; reducing the inputs of energy, water and food; as well as reducing the outputs of heat, waste/water and air pollution



- => Encourage and build circular systems
- => Spatial layout to support resource efficiency
- => Emphasize local interconnection

At
risk areas not permitted

Spatial organization, e.g. with barrier
=> Multi-use of infrastructure (storm



r

densification



(risk)
information

development
rights

land-use planning
zoning

How to make cities...?

Principles

- Coherence and collective effect of instruments
- Transparency : access to information policy
- Clear standards and processes
- Informed decision making
- Allocation of funds
- Accountability for actions taken
- Rule of law
- Recognition of the social and ecological responsibility of land ownership



11 SUSTAINABLE CITIES
AND COMMUNITIES

