



INFORM Suite

Shared evidence for managing risk, crises and disasters

Risk informed urban development (RIUD)

GIZ SV Global Initiative on Disaster Risk Reduction
GIZ GV Connective Cities

Insight moment: Harnessing the INFORM platform as a tool for national authorities to design the DRR strategies at different levels, from local to national

29 March 2022 at 14:30-15:30 CEST

Karmen Poljanšek

Team: Karmen Poljanšek, Luca Galimberti,
Daniele Dalla Valle, Sepehr Marzi

JRC E1 Disaster Risk Management

Joint Research Centre
the European Commission's
in-house science service

Joint
Research
Centre

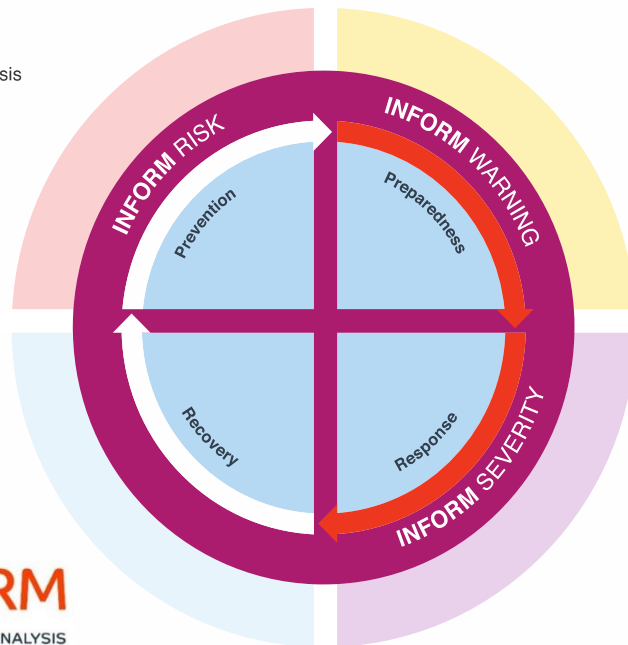
INFORM PRODUCTS

PRODUCT INFORM Risk

APPLICATION
Development, risk reduction, crisis prevention, preparedness

ANALYSIS
Generalised risk of a crisis based on structural conditions

STATUS
Operational



PRODUCT INFORM Warning

APPLICATION
Preparedness, early warning, early action

ANALYSIS
Indications of elevated risk, emerging crisis or crisis trigger

STATUS
In development

PRODUCT INFORM Severity

APPLICATION
Early action, crisis response

ANALYSIS
Severity of an existing crisis

STATUS
Operational

FIND OUT MORE ABOUT INFORM VISIT

<https://drmkc.jrc.ec.europa.eu/inform-index>

OPERATIONAL TOOLS:

INFORM Risk
INFORM Subnational Risk
INFORM Severity

TOOLS in BETA VERSION:

INFORM Epidemic Risk
INFORM COVID-19 Risk
INFORM COVID-19 Warning

TOOLS in DEVELOPMENT:

INFORM Climate Change Risk
INFORM Subnational Risk – new initiatives
INFORM Warning

Contact point:

Karmen Poljanšek
karmen.poljansek@ec.europa.eu

INFORM PRINCIPLES

Global

INFORM Global products cover 191 countries and Subnational products include all parts of the region or country they cover.

Open

All INFORM products are freely available and the methodology and sources are open and transparent.

Reliable

INFORM products use the best available methods and data. INFORM partners have committed to make them available into the future.

Flexible

INFORM products can be easily adapted and included into the decision-making processes of users.

INFORM PARTNERSHIP

INFORM Steering Group















INFORM Partners















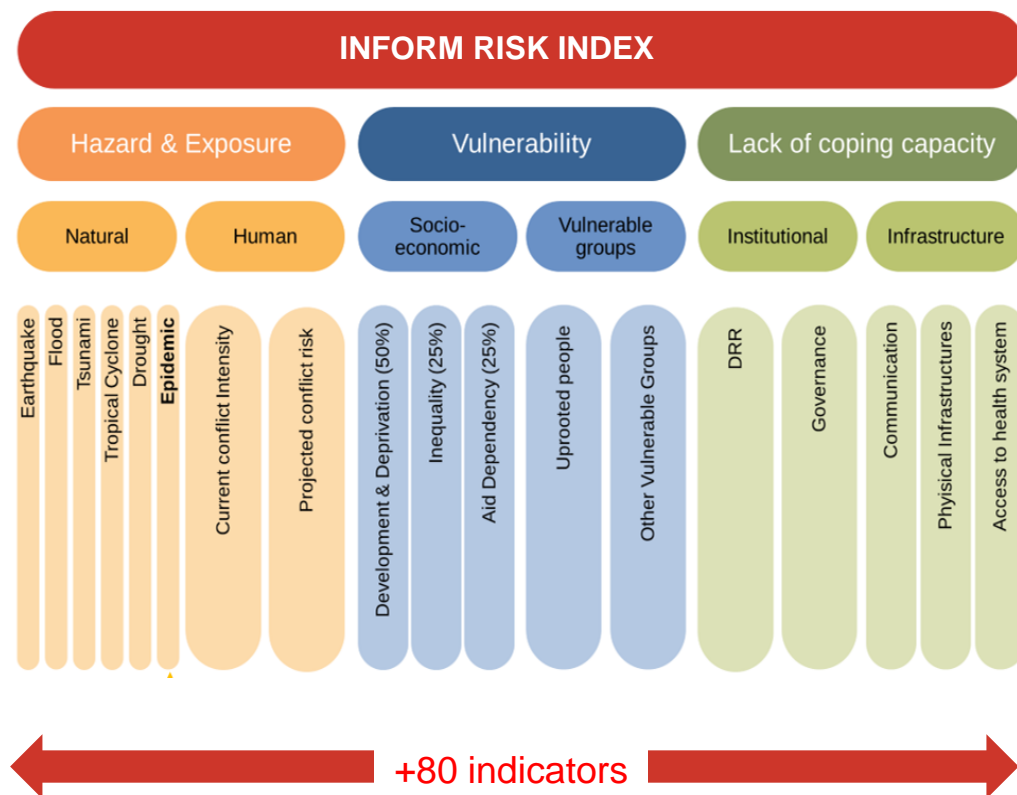




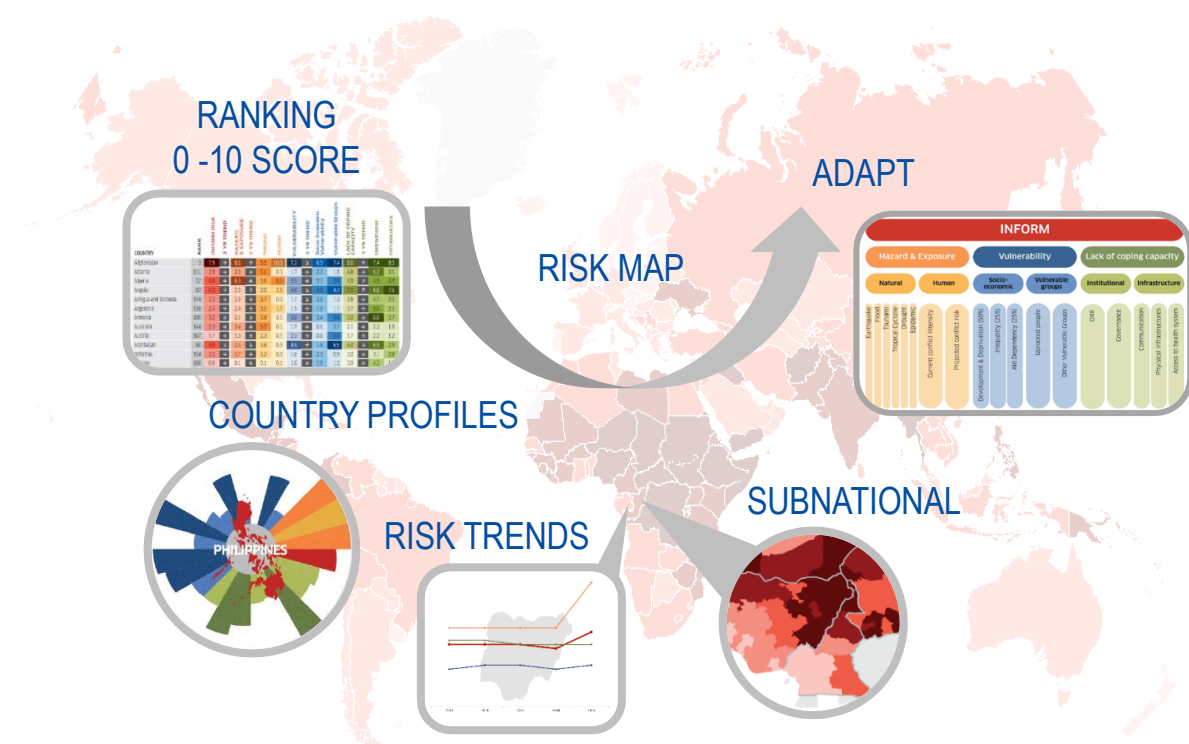

INFORM is a collaboration of the Inter-Agency Standing Committee and the European Commission. **The Joint Research Center of European Commission is the scientific and technical lead for INFORM.** UN OCHA is coordinator of INFORM.

INFORM **RISK** measures a risk of humanitarian crisis and disasters of the countries

HOW IT WORKS



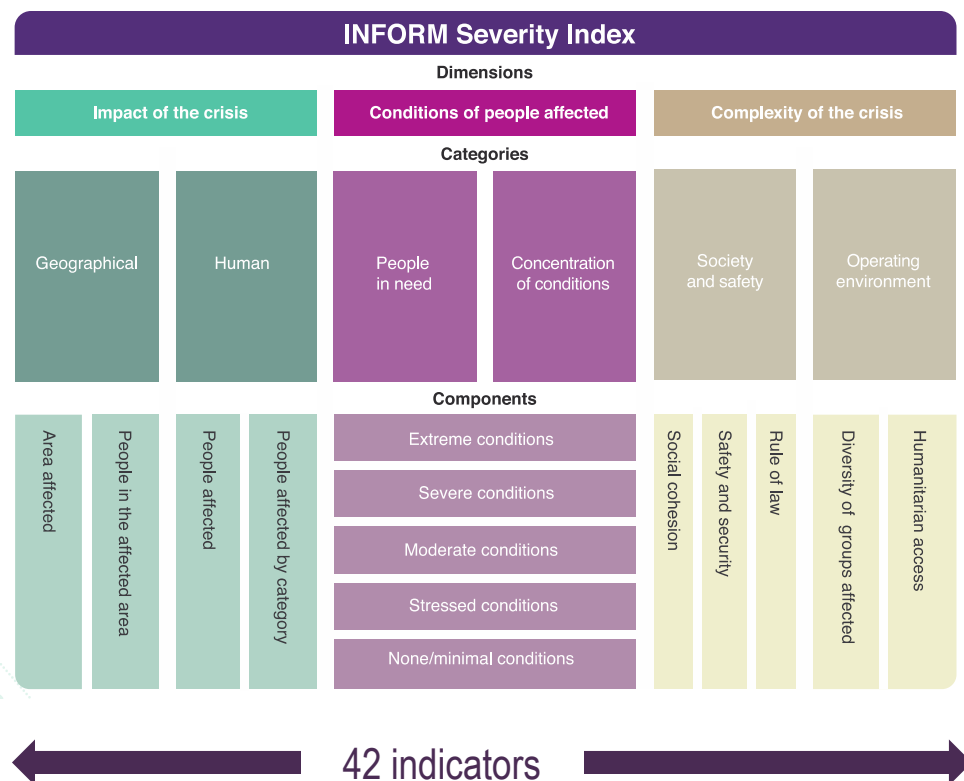
HOW TO USE IT



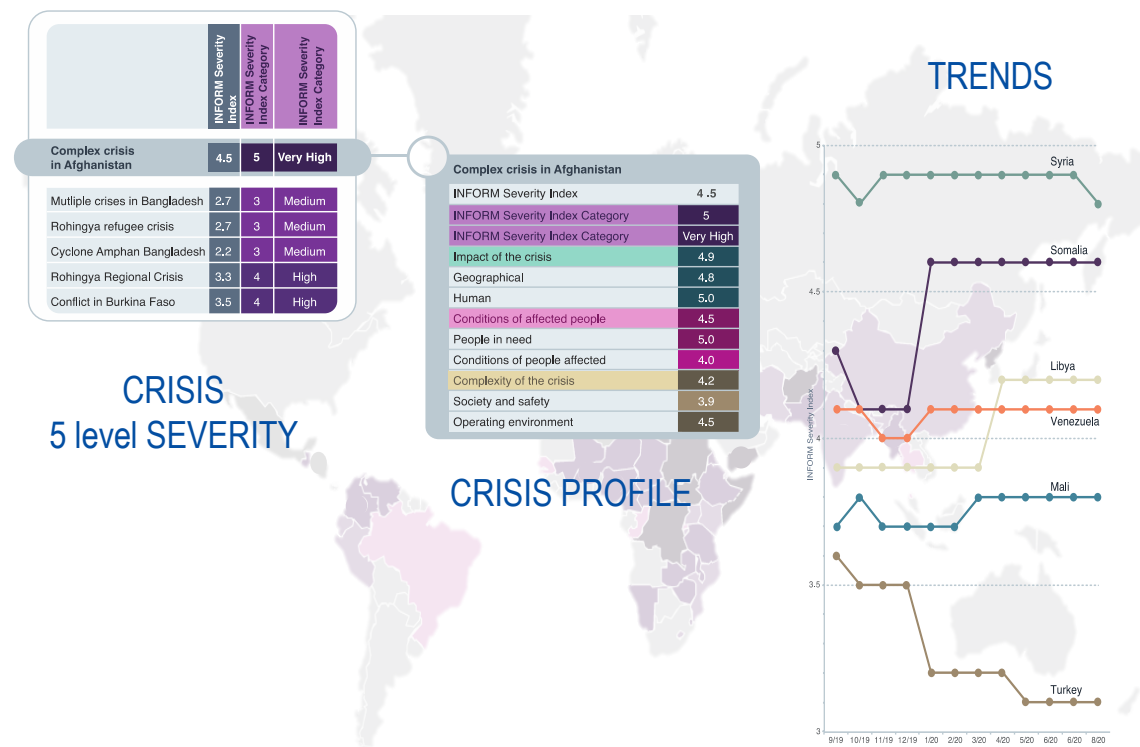
INFORM SEVERITY

measures the severity of humanitarian crisis globally

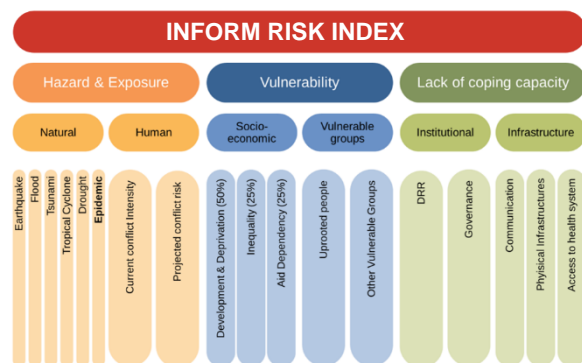
HOW IT WORKS



HOW TO USE IT



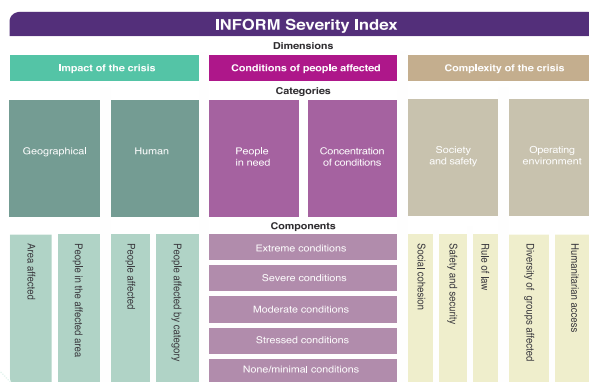
THE POWER OF COMPARABILITY



Be able to **compare** across country's risk or across crisis globally

Lead to **common and objective understanding** of risk or crisis severity

Be able to **prioritize** and allocate the resources proportional to the level of risk or severity of the crisis



Be able to **monitor trends** over time of country's risk or crisis severity and get feedback of action taken

Be **clear** what decision you made and why because having an insight into the drivers

and be **transparent**

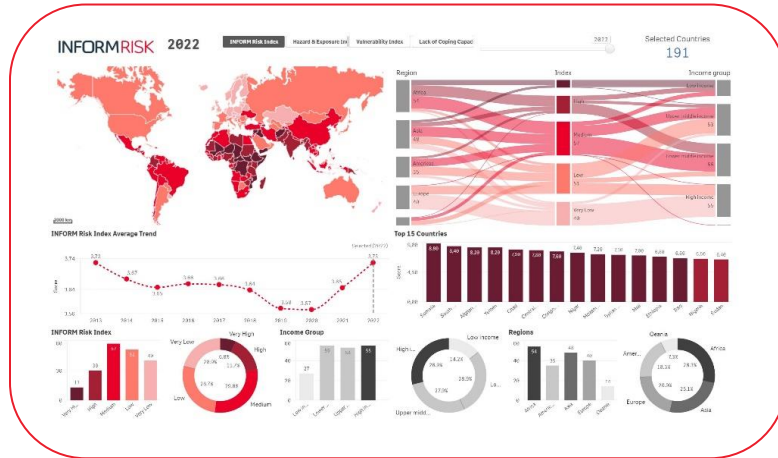
NFORM products are part of the methodological framework to assess the safety and security of the future EU Humanitarian Aid Corps

[illegible]

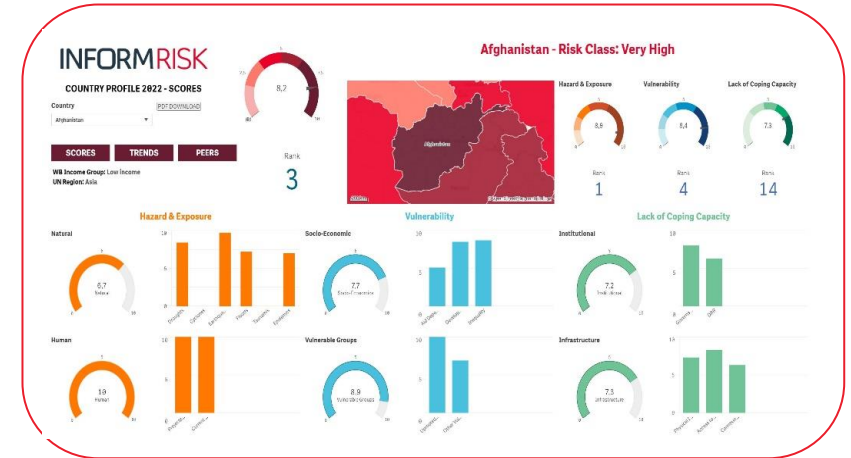
INTRODUCING DATA ANALYTICS

INFORMRISK

Facts and figures

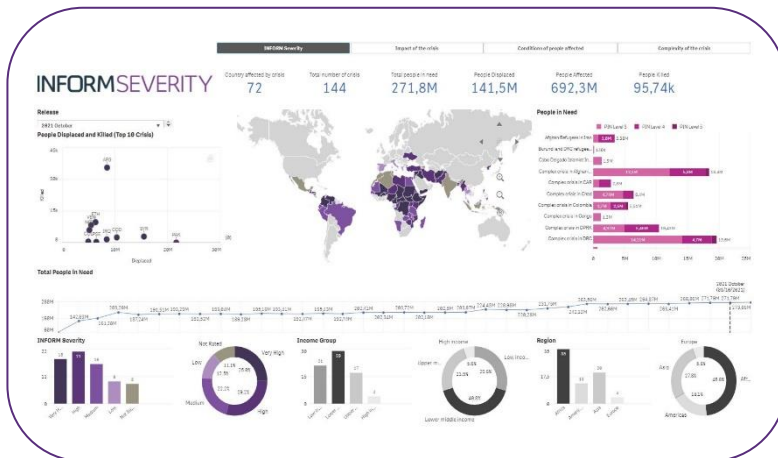


Country risk profiles

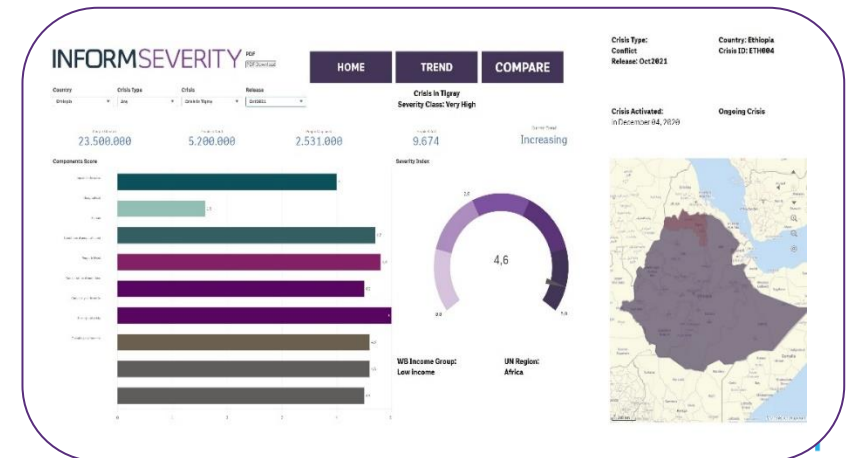


INFORMSEVERITY

Facts and figures

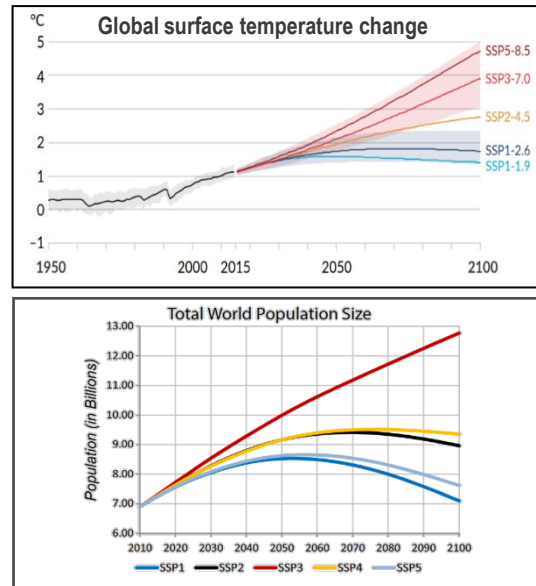


Crisis severity profiles



INFORM CLIMATE CHANGE RISK

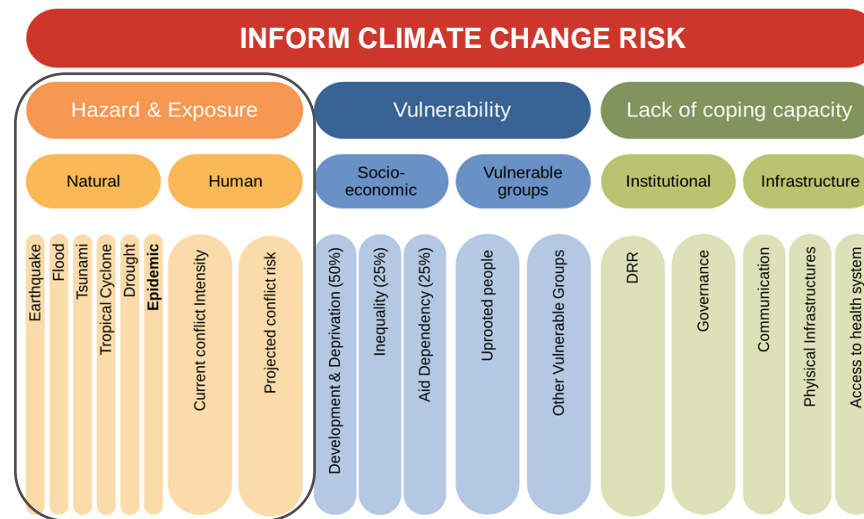
The INFORM Climate Change Risk is an **upgrade** of the INFORM Risk. It shows how INFORM Risk will change in 2050



- It uses projections based on
- Representative Concentration Pathways (RCPs)
 - Shared Socioeconomic Pathways (SSPs)

It is also possible to incorporate analogous modifications into **INFORM subnational models**, since the Hazard&Exposure data are analysed at very fine scale.

The overall objective of the **INFORM Climate Change Risk** is to develop a common evidence-based tool for risk-informed decision-making that **can help unify disaster risk reduction and climate change adaptation strategies**.

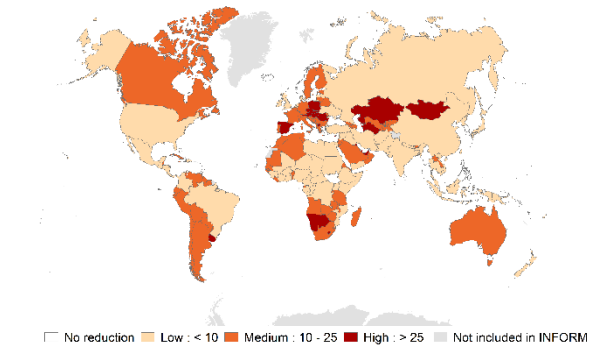


It includes **climate and demographic projections**.
Not yet vulnerability projections.

Results

It computes the **future risk** of climate-related amplified hazards and **vulnerability gap**

INFORM Vulnerability gap in 2050 (%) (RCP8.5-SSP3) to maintain the baseline risk 2021



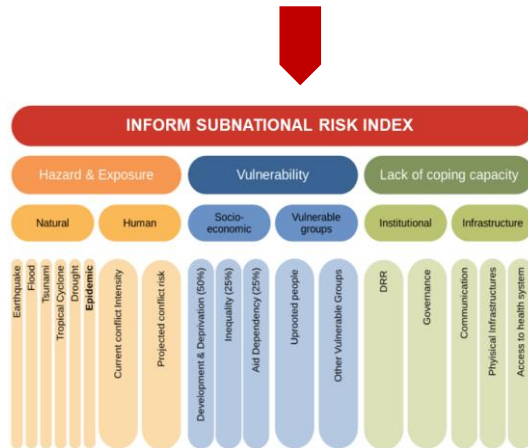
The largest mid-century vulnerability gap is observed in much of Europe, Western and Northern Asia and Africa. Countries there will need heavy investments in reducing vulnerability and increasing coping capacity to keep the manageable risk levels

From INFORM GLOBAL to INFORM SUBNATIONAL

INFORM SUBNATIONAL as a part of RISK GOVERNANCE

It could facilitate:

- the reading of **risk information** by national decision makers ,
- **common understanding of risks** that your country is facing by a wide range of actors involved,
- **allowing comparability** in space and time, prioritization and transparency
- **evidences for DRM planning process.**



INFORM
INDEX FOR RISK MANAGEMENT
SUBNATIONAL

can be a tool in hands of national authorities to design the national DRR strategies

As a risk assessment tool can be placed **at the heart of policy cycle** to implement integrated DRM.

Thank you

Find out more visit

<https://drmkc.jrc.ec.europa.eu/inform-index>



© European Union 2020

Unless otherwise noted the reuse of this presentation is authorised under the [CC BY 4.0](https://creativecommons.org/licenses/by/4.0/) license. For any use or reproduction of elements that are not owned by the EU, permission may need to be sought directly from the respective right holders.