

Lu Yan

Kristiane Schäfer



Workshop objectives for today

- Provide an **overview** concerning public health good practices and crises management during the pandemic
- To share **ideas and good practices** on municipal projects
- To inform about possible **next steps** within the programme Connective Cities





Frank Speer

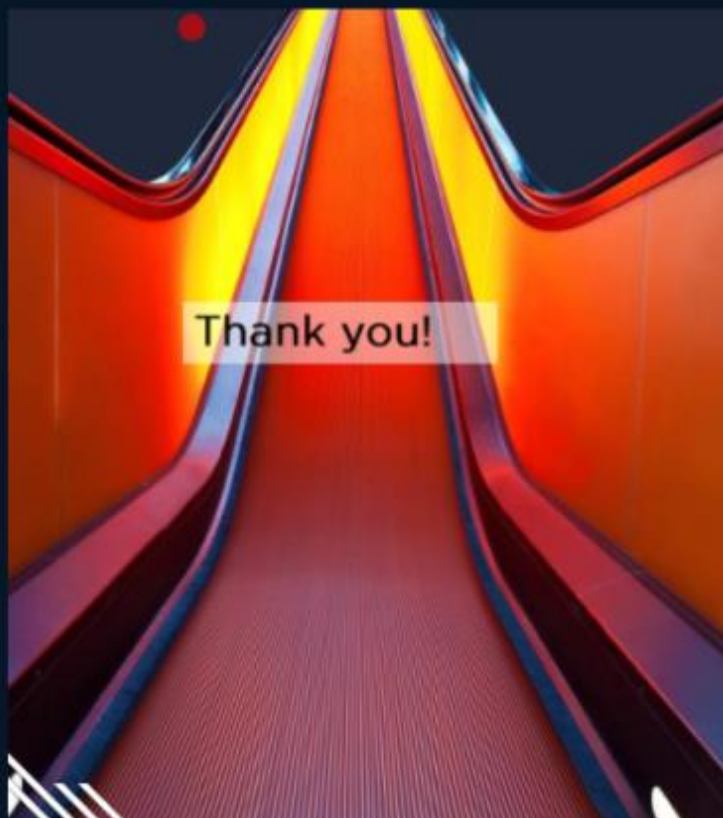
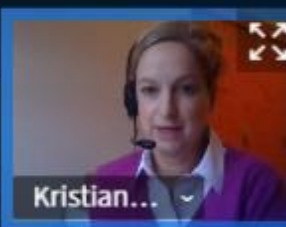


Frank Speer

Wang Mingming

CC_Felix Richter

Kristiane Schäfer



Thank you!



Business Metropole Ruhr GmbH
Am Thyssenhaus 1 - 3
45128 Essen

Frank Speer
0201-63248829
speer@business.ruhr

www.business.ruhr
www.matchmaker.ruhr





Lu Yan



Legend:
 ■ Yangtze River Delta
 ■ Coastal Areas

Map Labels: Beijing (北京), Tianjin (天津), Taicang (太仓), Shanghai (上海), Canton (广州), Hong Kong (香港), Haiyan (海盐)

Water+land	823 km ²
Land	649 km ²
Population	1 Million
GDP 2019	18.9 Billion

- 01 Overall Measures
- 02 Favorable Polices
- 03 Supports
- 04 Achievement



Lu Yan

Frank Speer



Items Eleven Favorable Policies

No application for

The bank actively extended the credit granted by SMEs for 3 months during the epidemic period.

the bank will be exempted from the handling fees for remittance and donation related to covid-19.

State owned, collective, government and public institutions should reduce and remit the real estate rent of small and medium-sized enterprises.

The Municipal Bureau of resource planning reduce and remit the land payment that should be paid in the contract during period of epidemic prevention for delisted land, and delayed payment of overdue fine.

Material guarantee

The legal entity registered in the city shall be guaranteed in accordance with the mode of "guarantee, fair trade, online booking and logistics distribution".

Contact 18013510016, 18112800016
1512928444

Reduce the cost of employment

For full-time graduates of undergraduate, master's degree and doctoral degree who come to taking during covid-19, the declaration process of "preferential rent for talents" can be simplified, and they can enjoy the rent subsidy of 400 yuan, 600 yuan and 800 yuan per month.

Real estate market transactions

Simplify the process, front-line services, and strive to achieve the "online service" of municipal services.

Resumption of construction site

organize workers to enter the construction site after being filed by the housing and construction department.

give priority to the major people's livelihood and key engineering projects.

Business buildings and incubators

The property can be unified to the district level to resume work reporting, to promote the safe and orderly resumption of work of the settled enterprises.

Enterprises affected by covid-19 and unbalanced production orders

Apply to the Department of human resources and social security to implement the system of comprehensive calculation of working hours.

For enterprises with operation difficulties caused by the epidemic

After reaching a consensus with the employee representatives, a special collective contract will be signed to stabilize the work position by adjusting the salary, taking turns to take off and shortening the working hours.

Enterprise employment demand

Online job recruitment service platform (www.torc.com.cn)

Multi channel collection and release of employment information

1-to-1 specialist system

